



**"We want to positively impact people's lives through the power and appreciation of art."**

May 2019  
Issue #130

**In This Issue:**

**Artwork for Behavioral Health**

For the FREE Report,

**Selecting Appropriate Art for Your Health Care Facility visit**

[www.montenagler.com](http://www.montenagler.com)

**Upcoming Events:**

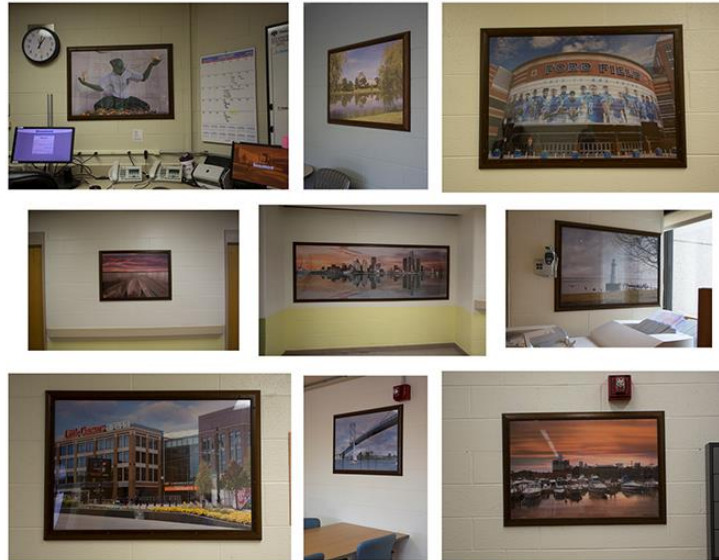
**Fine Art Photography with a Master/  
Schoolcraft College**

Jeffress Center Building  
18600 Haggerty, Liv., MI 48152  
734-462-4676  
June 18, 2019; 1pm - 5pm  
Cost: \$49

**Basic Photography Class/ Brighton  
Community Education**

850 Spencer Rd., Brighton, MI 48116  
734-462-4676  
Date: July 24, 2019; 6:30pm - 9:30pm  
Call Brighton Community Education for  
registration information 810-299-3818  
Cost: \$63

MONTE NAGLER  
FINE ART, L.L.C.



Examples of Ligature Resistant Frames

## Artwork For Behavioral Health

Artwork provides a visually pleasing environment but may also integrate products that cause a safety concern. All artwork and frames should be free from materials that can be broken to produce sharp edges. Likewise, artwork must be well secured to the wall to prohibit removal and consideration should be given to seal all sides and edges.

In all cases, the installation method is just as important as the type of product being provided. Installation must be supervised by an individual with the knowledge regarding the strict safety precautions necessary, and every piece should be inspected individually before the space is used for patient occupancy.

Location of the artwork should also be considered. Wall spaces within a direct line-of-sight from staff is ideal. Avoid placing artwork in alcoves or around corners from the nurse station. These spaces would allow patients an opportunity to tamper with the artwork.

**Direct application:**

Images can be applied directly to the wall with vinyl wall covering or painted materials. To secure edges, composite molding can be mounted directly to the wall to create a frame. All edges should be sealed to decrease tampering.



**Direct application:**

**Pros:**

- Flexible material
- Frame can be made from various materials

**Cons:**

- Difficult to repair or change images
- Requires routine inspection for damaged or loose items

**Adhesive Text:**

Positive phrases added to walls can inspire Veterans and provide encouragement toward recovery. Adhesive text should be mounted in locations where it can be seen but not accessed. Additionally, consider an application of a clear finish topcoat to protect the text and secure edges.



**Adhesive Text:**

**Pros:**

- Flexible material
- Applied directly to the walls with no depth or framing needs

**Cons:**

- Difficult to repair or change text
- Requires routine inspection for loose edges

### Security Frame Artwork:

Security frame artwork is comprised of multiple components. The artwork itself is matted and secured to the outer frame and covered with a non-breakable Lexan material. An additional component (or interior frame) fits inside the outer frame and is completely concealed when fully installed. The entire piece should then be sealed to the wall with a clear caulking.

Not only is the framing and physical composition of the artwork important, but careful consideration should be given to the images within the artwork as well. Specific colors or images may impact the recovery of the patients. Speak with the staff to gain information on the specific population of the Veterans at your facility and geographic area.

Security Frame Designers Art of California (DAC) is working to patent this item and the installation method. For more specific information, please contact Designers Art of California.



### Security Frame Artwork (DAC):

#### Pros:

- Frame is angled and the flat top is minimal
- Artwork is protected by acrylic
- Appearance is similar to art-work throughout the rest of the medical center with image and matting and frame

#### Cons:

- Requires routine inspection for damage or signs of tampering



**Frameless**, no-cover artwork  
Designers Art of California (DAC)



### Printed Acrylic:

Printed Acrylic provides artwork without unnecessary layers of material or framing. The image is printed on the back of clear acrylic with beveled edges and secured with counter-sunk tamper-resistant screws. Edges are sealed to the wall with clear caulk. The acrylic can be specified in a gloss or matte surface.

Images and details provided  
by James Gallery



### Printed Acrylic:

#### Pros:

- No frames or layers to separate
- Artwork is protected by acrylic
- No sharp edges
- Matte or gloss finish

#### Cons:

- Requires routine inspection for damage or signs of tampering



Installed view of fit to  
wall with silicone  
bead



Installed view of radiu  
beveled edge and  
recessed security  
screw



front view of  
radius corner and  
recessed security  
screw



side view of 3/8"  
acrylic beveled  
edge and  
security screw